

# Rampion 2 Wind Farm

## Category 6: Environmental Statement

### Volume 3, Chapter 28: Population and human health - Figures

**Date: August 2023**

**Revision A**

Document Reference: 6.3.28

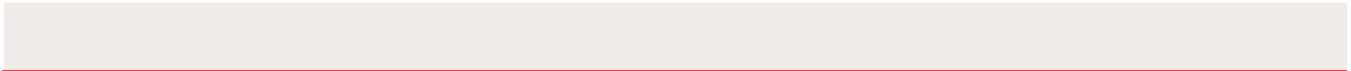
Pursuant to: APFP Regulation 5 (2) (a)

Ecodoc number: 004884773-01



## Document revisions

Revision	Date	Status/reason for issue	Author	Checked by	Approved by
A	04/08/2023	Final for DCO Application	WSP	RED	RED



# Contents

---

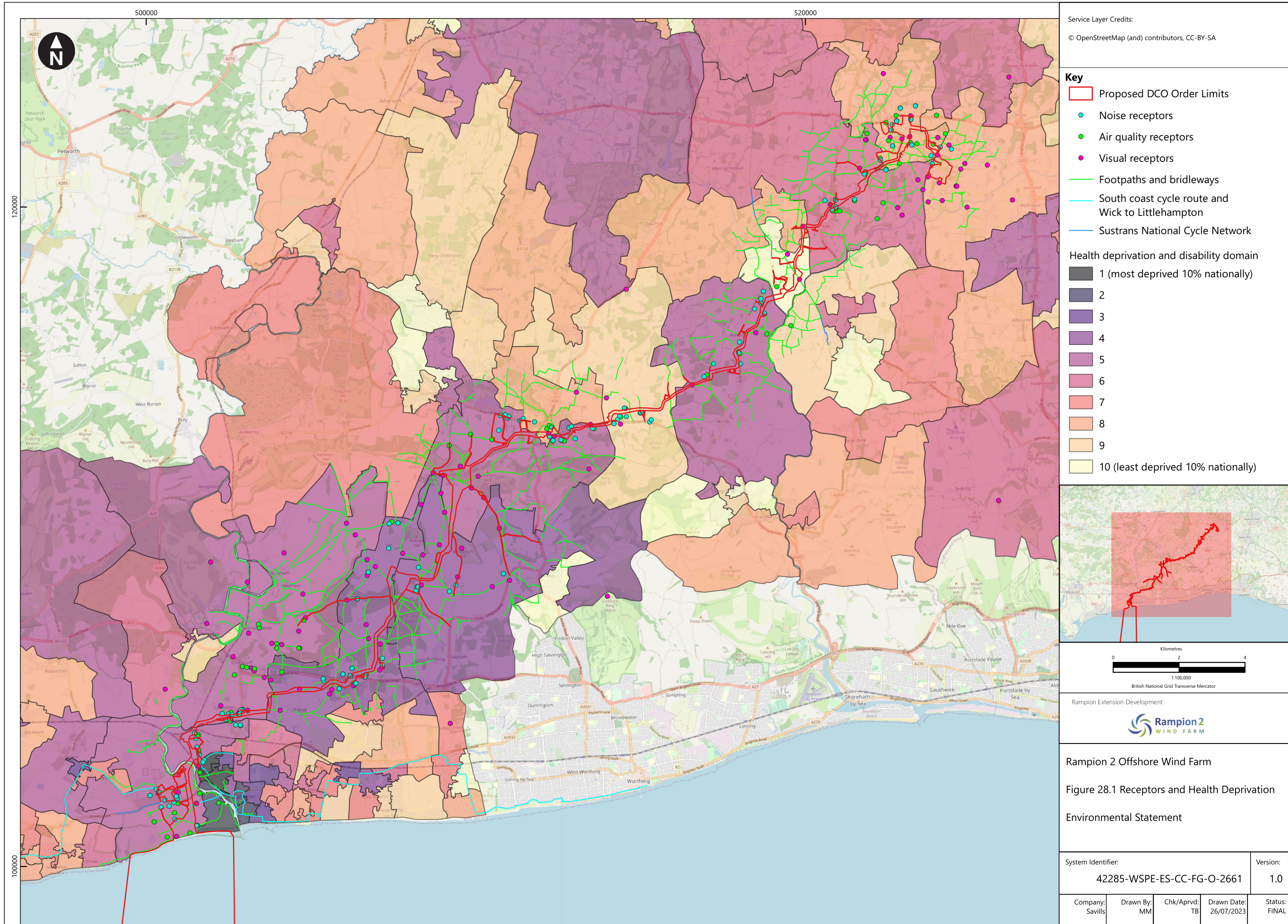
## List of Figures

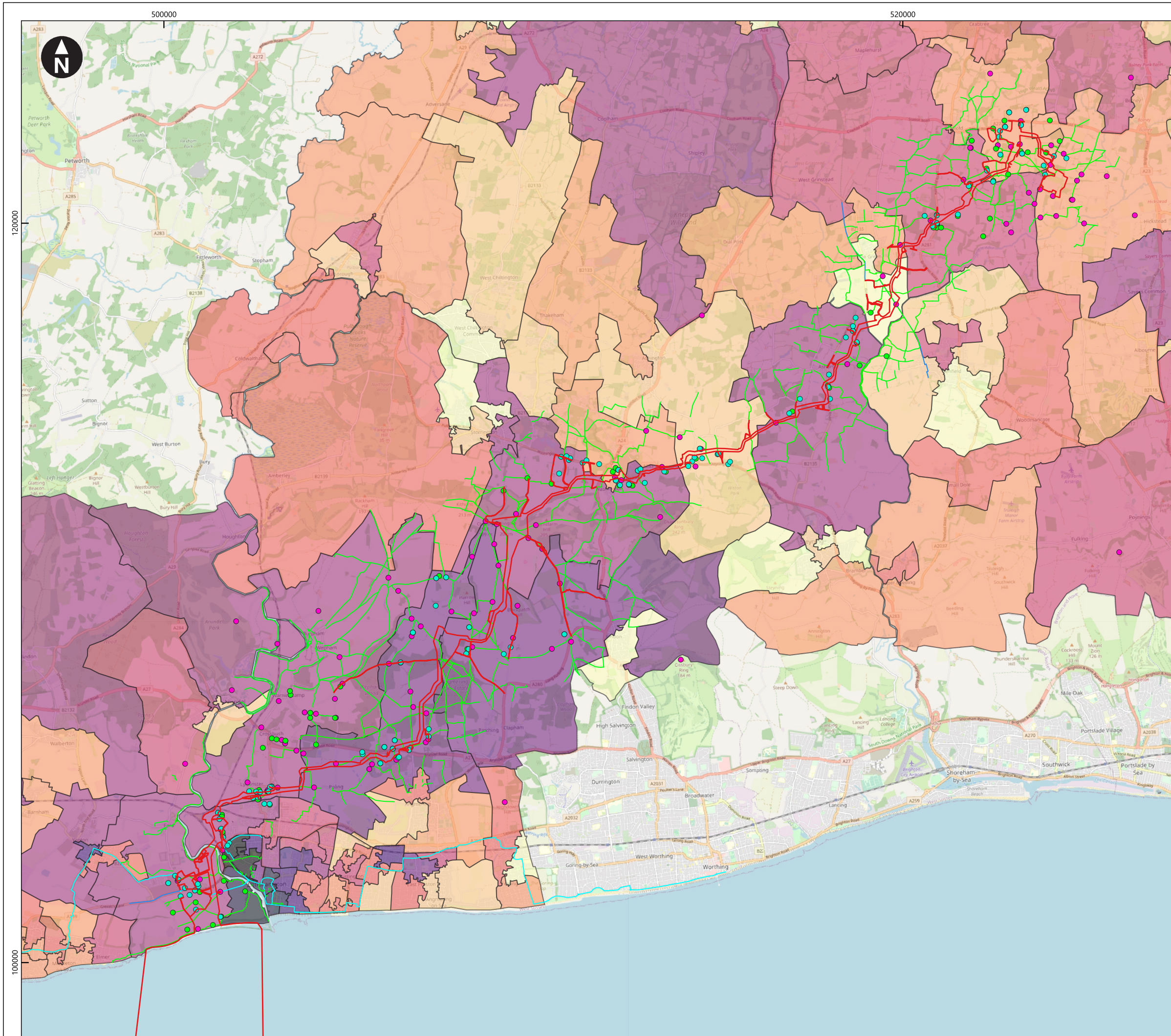
---

<b>Figure number</b>	<b>Figure Title</b>	<b>APFP number</b>	<b>Ecodoc number</b>	<b>Revision</b>	<b>Revision Date</b>
Figure 28.1	Receptors and Health deprivation	5 (2) (a)	004884795-01	A	04/08/2023
Figure 28.2	Receptors and Index of Multiple Deprivation	5 (2) (a)	004884796-01	A	04/08/2023

---

Page intentionally blank





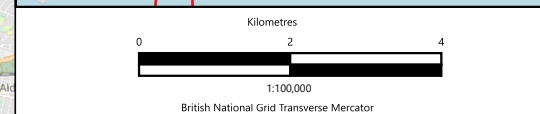
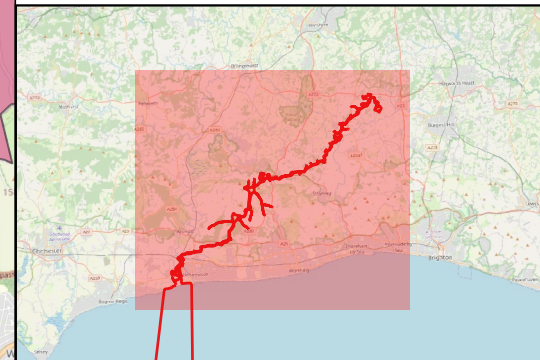
Service Layer Credits:  
© OpenStreetMap (and) contributors, CC-BY-SA

**Key**

- Proposed DCO Order Limits
- Noise receptors
- Air quality receptors
- Visual receptors
- Footpaths and bridleways
- South coast cycle route and Wick to Littlehampton
- Sustrans National Cycle Network

**Index of multiple deprivation**

- 1 (most deprived 10% nationally)
- 2
- 3
- 4
- 5
- 6
- 7
- 8
- 9
- 10 (least deprived 10% nationally)



Rampion Extension Development

**Rampion 2 Offshore Wind Farm**

Figure 28.2 Receptors and Index of Multiple Deprivation

Environmental Statement

System Identifier: 42285-WSPE-ES-CC-FG-O-5251				Version: 1.0
Company: Savills	Drawn By: MM	Chk/Prvd: TB	Drawn Date: 26/07/2023	Status: FINAL